



Core Bulking Glass Mat

Bring Lightness To Your Structure

PRODUCT DESCRIPTION

Core Bulking Glass Mats constitute a product family of wet formed non-wovens filled with micro-spheres. The structure of the Core Bulking Glass Mat products consists of uniformly dispersed individual filaments of Advantex® glass and are produced with controlled air porosity and thickness. The products are available in a thickness range of 0.7 mm to 4 mm and are about 30 – 50 volume% filled with micro-spheres. The binder system is suited for use in closed mold processes such as vacuum infusion. The products work best in flat or single side curved laminates. Core Bulking Glass Mats are also available in perforated form, if required. The products with a lower volume% filling degree, such as the 30 - 35 volume% filled materials, are well suited for open mold applications.

PRODUCT BENEFITS

- Core Bulking Glass Mat products are filled with hollow micro-spheres and are thus designed to provide bulk to the core of a laminate or sandwich material, thereby taking out unnecessary space and lead to weight and resin savings.
- The binder used in these products is insoluble in most common composite resin types and is designed for fast wet out in vacuum infusion.
- Core Bulking Glass Mats provide excellent cosmetics when used in conjunction with surfacing veils.

APPLICATIONS

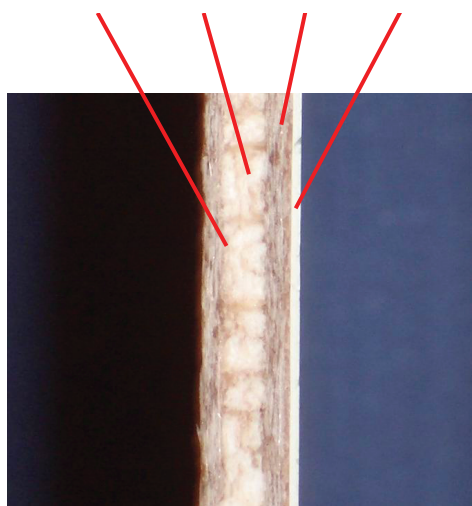
- GRP panels
- Aluminum panels
- Boards
- Pultrusion parts
- Marine

SAVINGS

- Weight
- Resin Content
- Gluing steps
- Production steps
- Manufacturing costs
- Material costs

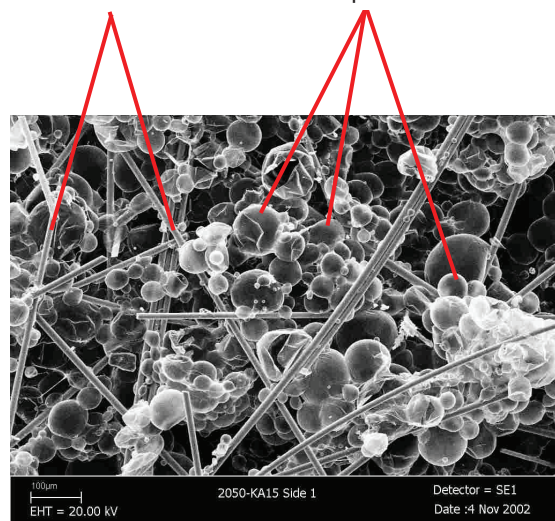
TYPICAL LAMINATE SETUP

CSM/Core Glass Mat/CSM / Gel-coat



MICROGRAPH OF CORE GLASS MAT

Advantex® filaments / Microspheres



Core Bulking Glass Mat

Bring Lightness To Your Structure

PRODUCT RANGE INCLUDE THE FOLLOWING:

| PRODUCT CODE | THICKNESS [MM] | FILLING DEGREE [VOL.%] | AREA WEIGHT [G/SQM] | BINDER TYPE |
|--------------|----------------|------------------------|---------------------|-------------|
| C0730 KA14 | 0.7 | 30 | 42 | PVA |
| C1035 KA06 | 1 | 35 | 57 | PVA |
| C1050 KA16 | 1 | 50 | 70 | PVA |
| C2035 KA05 | 2 | 35 | 115 | PVA |
| C2050 KA15 | 2 | 50 | 120 | PVA |
| C3050 KA18 | 3 | 50 | 260 | PVA |

EXAMPLE OF SAVINGS IN A UP-GRP LAMINATE:

| LAMINATE | THICKNESS [MM] | GLASS CONTENT [G/SQM] | RESIN CONTENT [G/SQM] | WEIGHT [G] |
|-----------------------|----------------|-----------------------|-----------------------|------------|
| Standard * | 2.7 | 900 | 2815 | 3714 |
| Core Glass Mat GRP ** | 2.8 | 670 | 2477 | 3146 |
| Savings | +0.1 | 230 | 338 | 568 |

* 3 layers of 300 g/sqm CSM;

** 2 skin layers of 300 g/sqm CSM 1 layer C1050KA16 in the middle

Contact
nonwovensinfo@owenscorning.com

nonwovensinfo@owenscorning.com

nonwovensinfo@owenscorning.com



OCV™ Non-Woven Technologies

**OWENS CORNING
COMPOSITE MATERIALS, LLC**
ONE OWENS CORNING PARKWAY
TOLEDO, OHIO 43659
1.800.GET.PINK®
www.owenscorning.com
www.owenscorning.com/composites

**EUROPEAN OWENS CORNING
FIBERGLAS, SPRL.**
166, CHAUSSÉE DE LA HULPE
B-1170 BRUSSELS
BELGIUM
+32.2.674.82.11

**OWENS CORNING - OCV ASIA PACIFIC
SHANGHAI REGIONAL HEADQUARTERS**
2F OLIVE LVO. MANSION
620 HUA SHAN ROAD
SHANGHAI 200040
CHINA
+86.21.62489922

This information and data contained herein is offered solely as a guide in the selection of a reinforcement. The information contained in this publication is based on actual laboratory data and field test experience. We believe this information to be reliable, but do not guarantee its applicability to the user's process or assume any responsibility or liability arising out of its use or performance. The user agrees to be responsible for thoroughly testing any application to determine its suitability before committing to production. It is important for the user to determine the properties of its own commercial compounds when using this or any other reinforcement. Because of numerous factors affecting results, we make no warranty of any kind, express or implied, including those of merchantability and fitness for a particular purpose. Statements in this publication shall not be construed as representations or warranties or as inducements to infringe any patent or violate any law safety code or insurance regulation.

Pub. No. 10012683. Owens Corning reserves the right to modify this document without prior notice. ©2010 Owens Corning.

NWT_Core Bulking_ww_05-2010_Rev1